

Week 5 Meeting



2/14/19

Team Leader: YJ

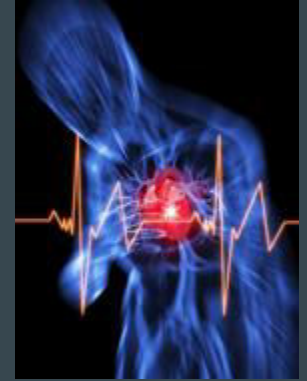
Other Team Members: Katayi, Nur, Chufu, Tam

Advisor: Dr. Ajjarapu

Safety Moment: Cardiac Arrest

KNOW HOW TO SAVE A LIFE

- Based on Sudden Cardiac Arrest (SCA) Foundation, SCA is the third leading cause of death in the U.S.
- Approximately 356,000 people in the U.S. experience EMS-assessed out-of-hospital non-traumatic SCA each year. And nine out of 10 victims die. (Less than 10% survive)
- Now we know it's an important issue, but how to increase the chance of survival?
 - NOTICE the AEDs in the buildings!
 - Using AEDs to perform cardiopulmonary resuscitation (CPR) within the first three minutes of cardiac arrest could increase the chance of survival by 75%.

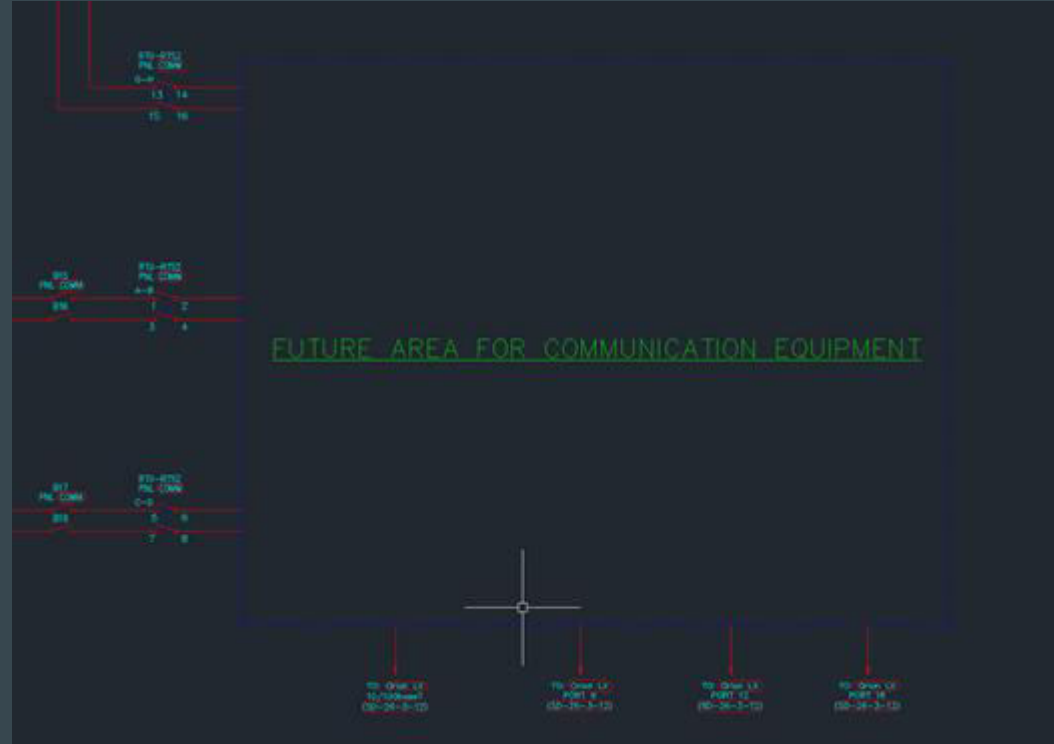


Topics

- Bank 1 annunciator
- Distributed I/O board
- Communication outside
- DC auxiliary
- AC auxiliary

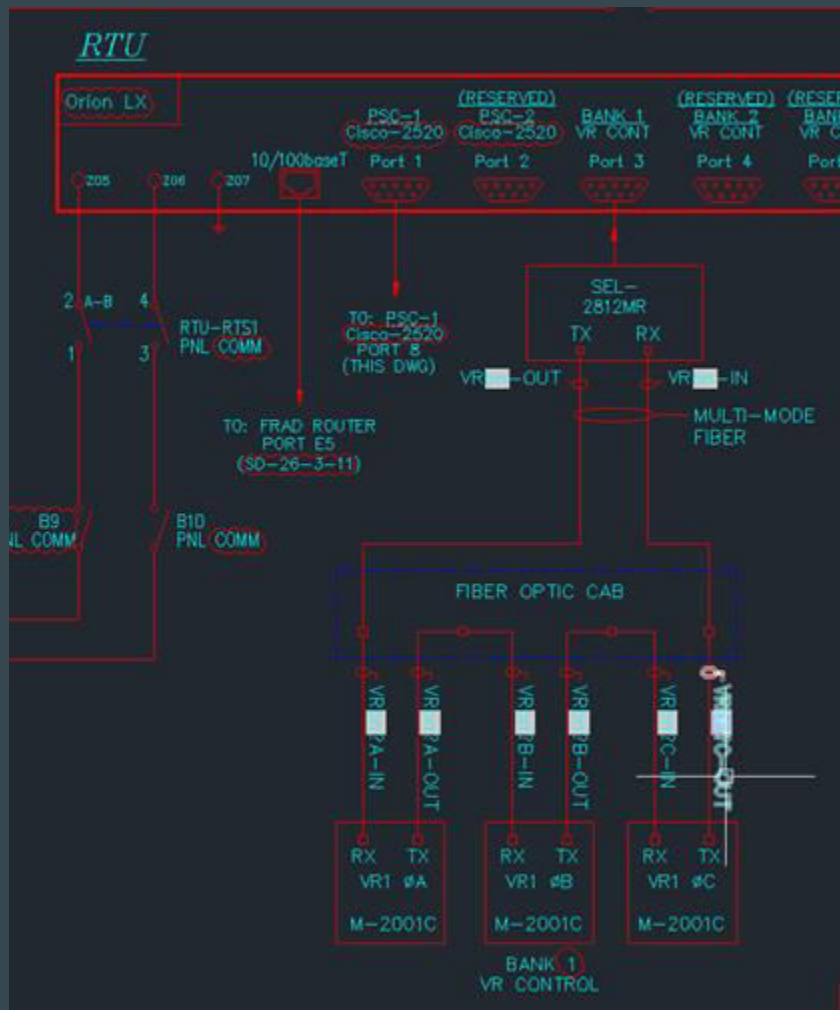
Communication Outside

As we noticed, comm outside drawing is just connected to comm rtu drawing but what's the purpose of the blue box? Do we have to remove it?



Communication RTU

What is SEL-2812MR?



Questions

1. For the Communication RTL drawing, what documents do we refer to? Because the project scope diagram is very brief and general but there's a lot more ports and stuffs inside the actual autocad drawing.